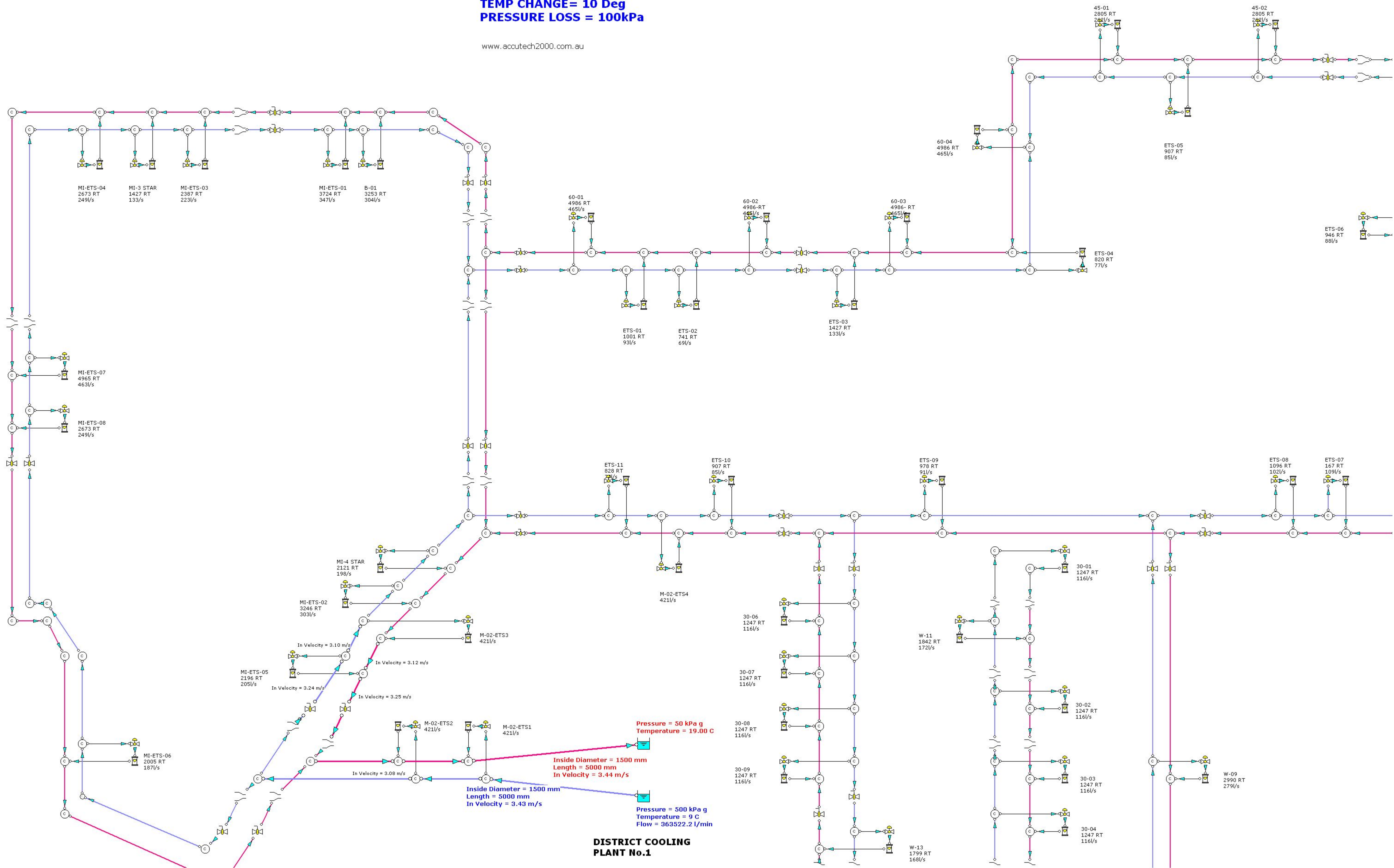
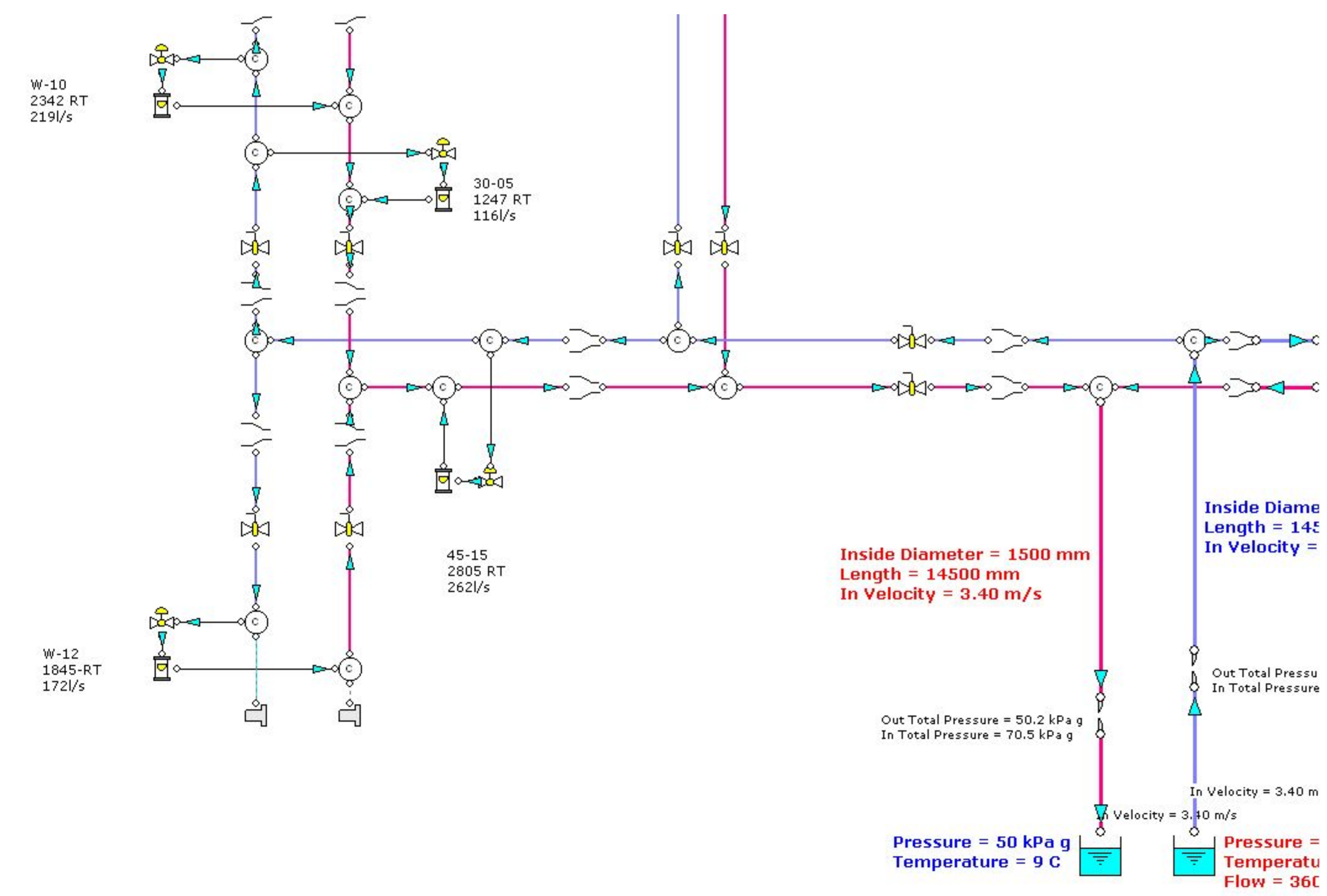
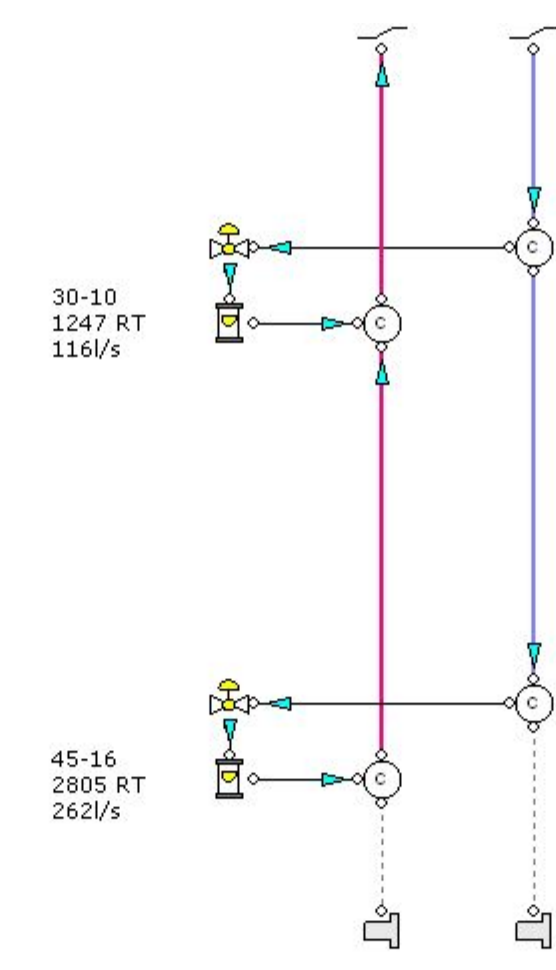
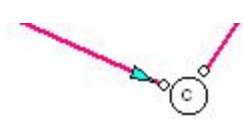


CITY OF ARABIA - DUBAI PROPOSED DISTRICT COOLING SYSTEM

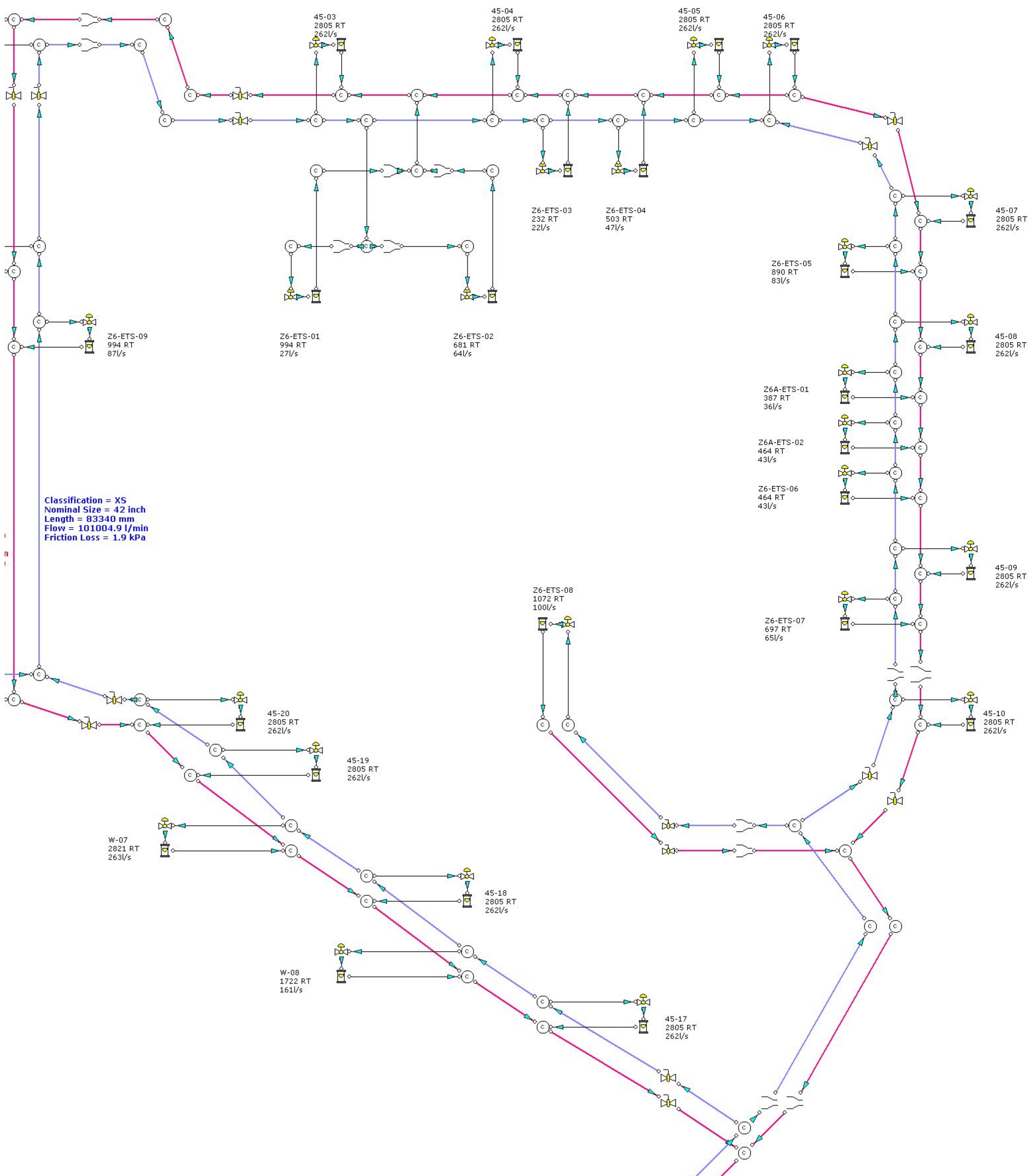
**ENERGY TRANSFER SYSTEMS (ETS):
TEMP CHANGE= 10 Deg
PRESSURE LOSS = 100kPa**

www.accutech2000.com.au



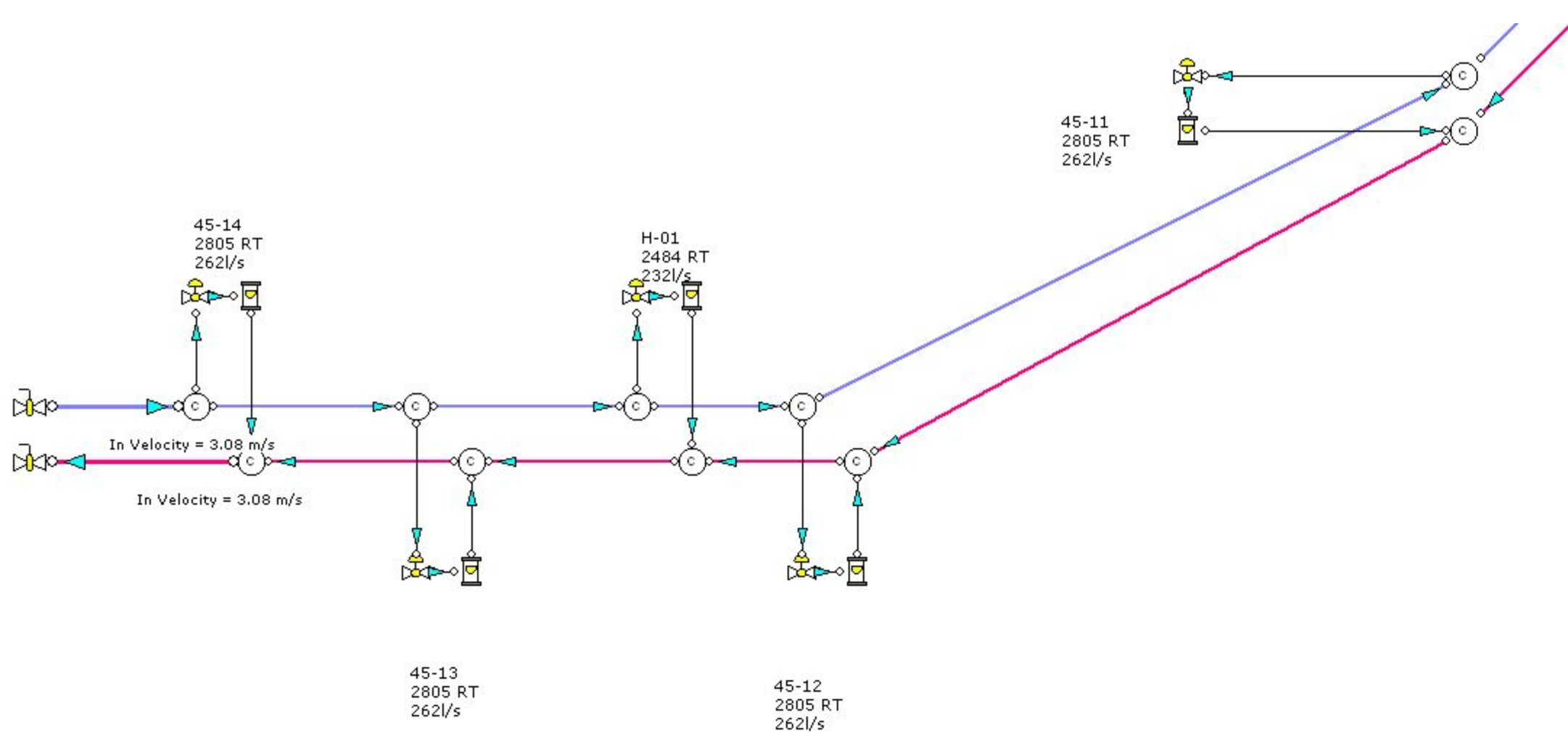


**DISTRICT COOLING
PLANT NO.2**



Classification = XS
 Nominal Size = 42 inch
 Length = 83340 mm
 Flow = 101004.9 l/min
 Friction Loss = 1.9 kPa

- 45-03 2805 RT 262l/s
- 45-04 2805 RT 262l/s
- 45-05 2805 RT 262l/s
- 45-06 2805 RT 262l/s
- 45-07 2805 RT 262l/s
- 45-08 2805 RT 262l/s
- 45-09 2805 RT 262l/s
- 45-10 2805 RT 262l/s
- 45-17 2805 RT 262l/s
- 45-18 2805 RT 262l/s
- 45-19 2805 RT 262l/s
- 45-20 2805 RT 262l/s
- W-07 2821 RT 263l/s
- W-08 1722 RT 161l/s
- Z6-ETS-01 994 RT 27l/s
- Z6-ETS-02 681 RT 64l/s
- Z6-ETS-03 232 RT 22l/s
- Z6-ETS-04 503 RT 47l/s
- Z6-ETS-05 890 RT 83l/s
- Z6-ETS-06 464 RT 43l/s
- Z6-ETS-07 697 RT 65l/s
- Z6-ETS-08 1072 RT 100l/s
- Z6A-ETS-01 387 RT 36l/s
- Z6A-ETS-02 464 RT 43l/s



i